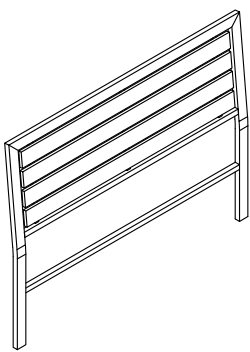
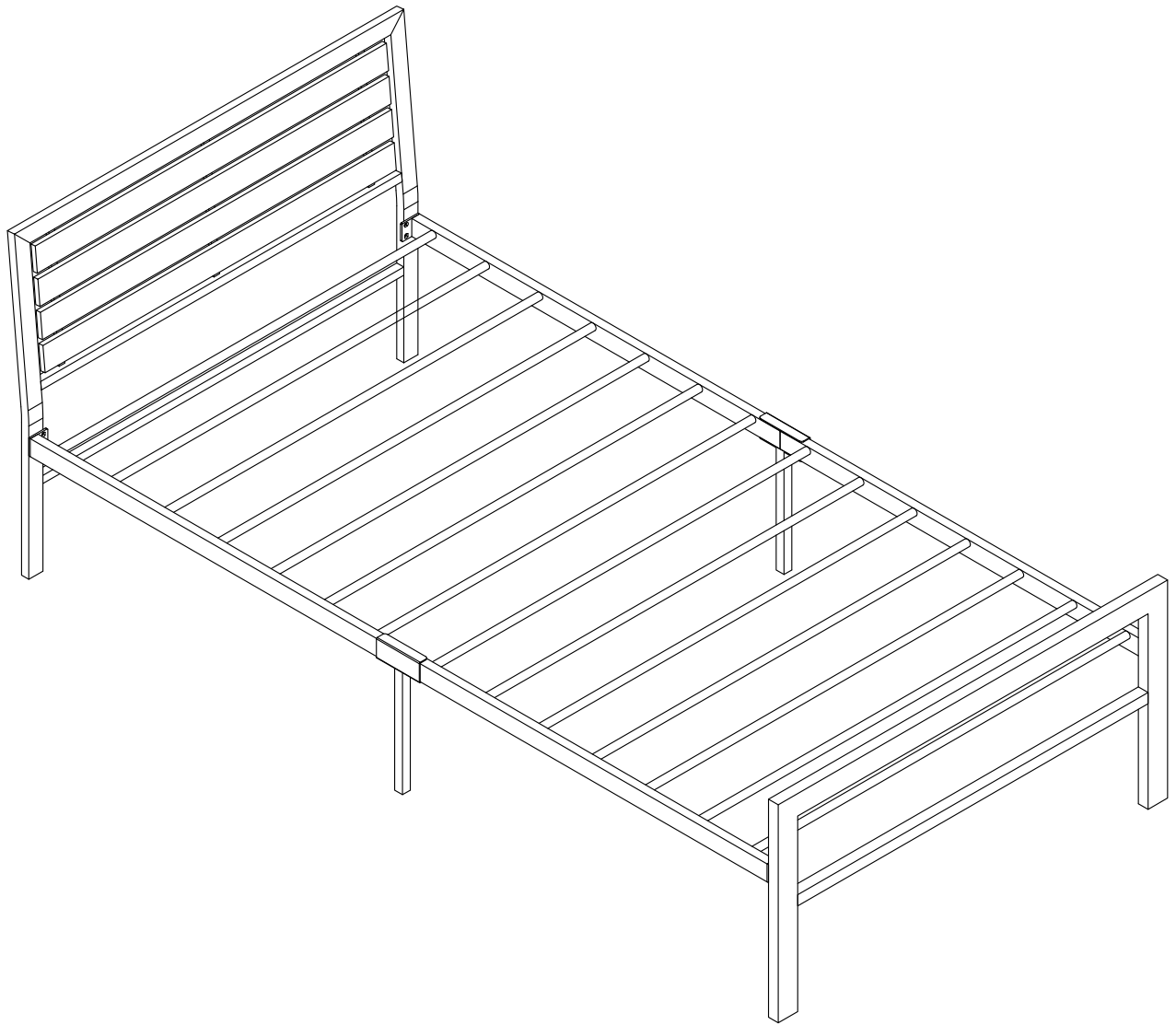
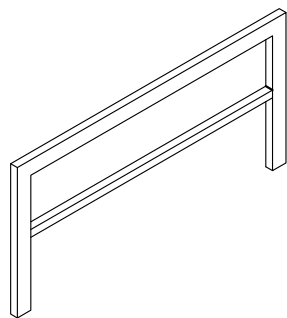


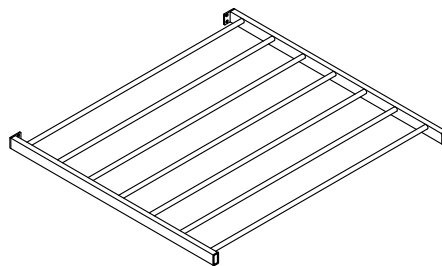
ASSEMBLY INSTRUCTIONS F9412T



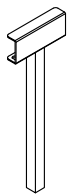
A*1PCS



B*1PCS



C*2PCS



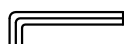
D*2PCS

E*16PCS



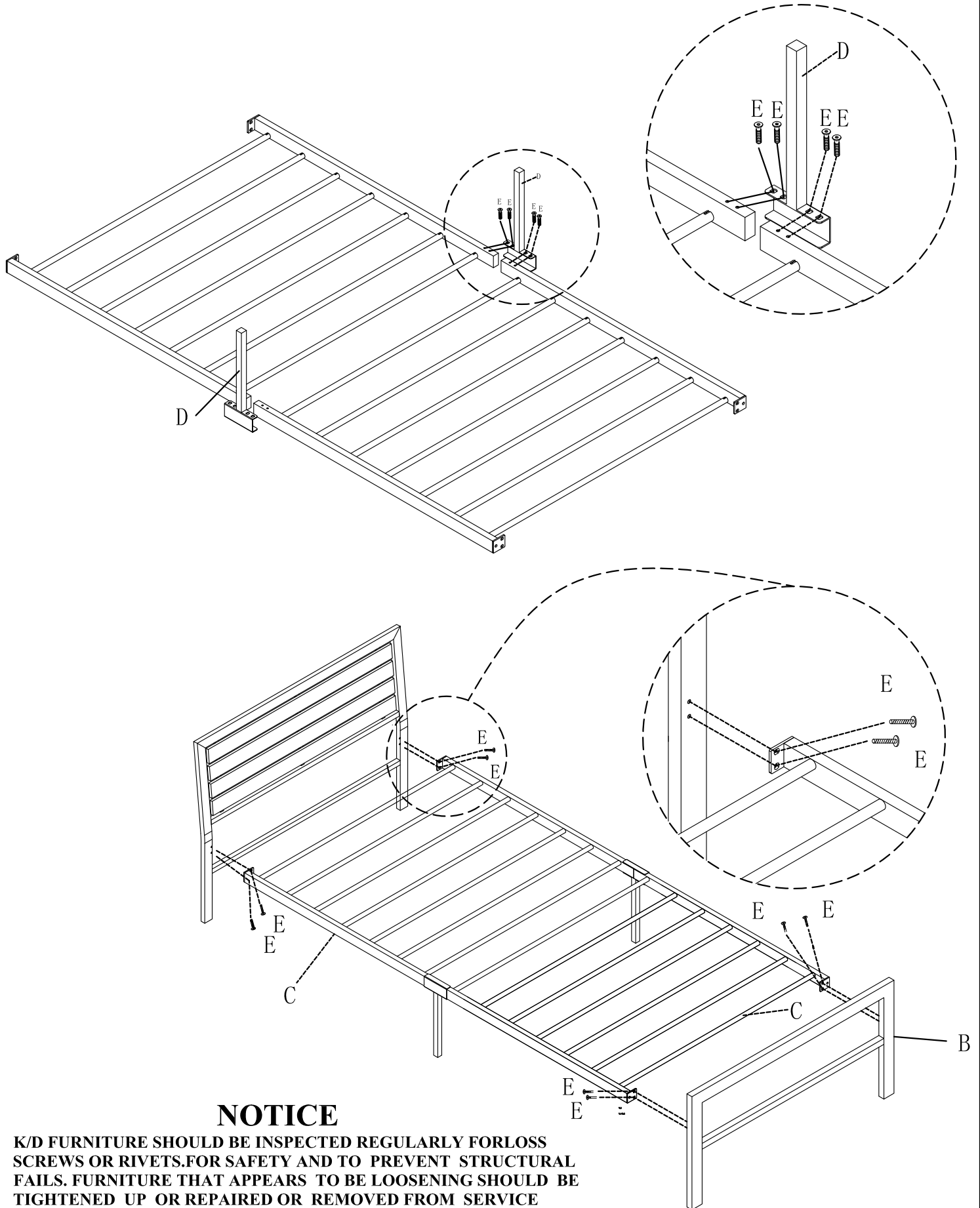
1/4"*16mm

F*1PCS



1/4"

Note: Pls do not tighten all bolts until the bed is assembled completely



NOTICE

K/D FURNITURE SHOULD BE INSPECTED REGULARLY FOR LOSS OF SCREWS OR RIVETS. FOR SAFETY AND TO PREVENT STRUCTURAL FAILURES. FURNITURE THAT APPEARS TO BE LOOSENING SHOULD BE TIGHTENED UP OR REPAIRED OR REMOVED FROM SERVICE IMMEDIATELY. FOR MORE INFORMATION ON FURNITURE MAINTENANCE, PLEASE CONTACT YOUR LOCAL FURNITURE DEALERS. THANKS FOR PURCHASING POUNDEX FURNITURE. POUNDEX FURNITURE IS INTENDED FOR HOUSEHOLD ONLY. NOT FOR COMMERCIAL USAGE.